

FOR SALE, LEASE OR BTS
PHASE II - FROM ±53,110 TO ±219,000 SF
UP TO 38 ADDITIONAL ACRES AVAILABLE

DELIVERING MARCH 2026

610

BUSINESS DISTRICT



ANDREW JEWETT SR.
Senior Vice President
+1 713 577 1735
andrew.jewett@cbre.com

JASON DILLEE
Executive Vice President
+1 713 577 1796
jason.dillee@cbre.com

GREG HOLMES
Senior Associate
+1 713 577 1902
gregory.holmes@cbre.com

KAYLA RIPPLE
Transaction Manager
+1 713 577 1731
kayla.ripple@cbre.com

LOVETT
INDUSTRIAL

CBRE

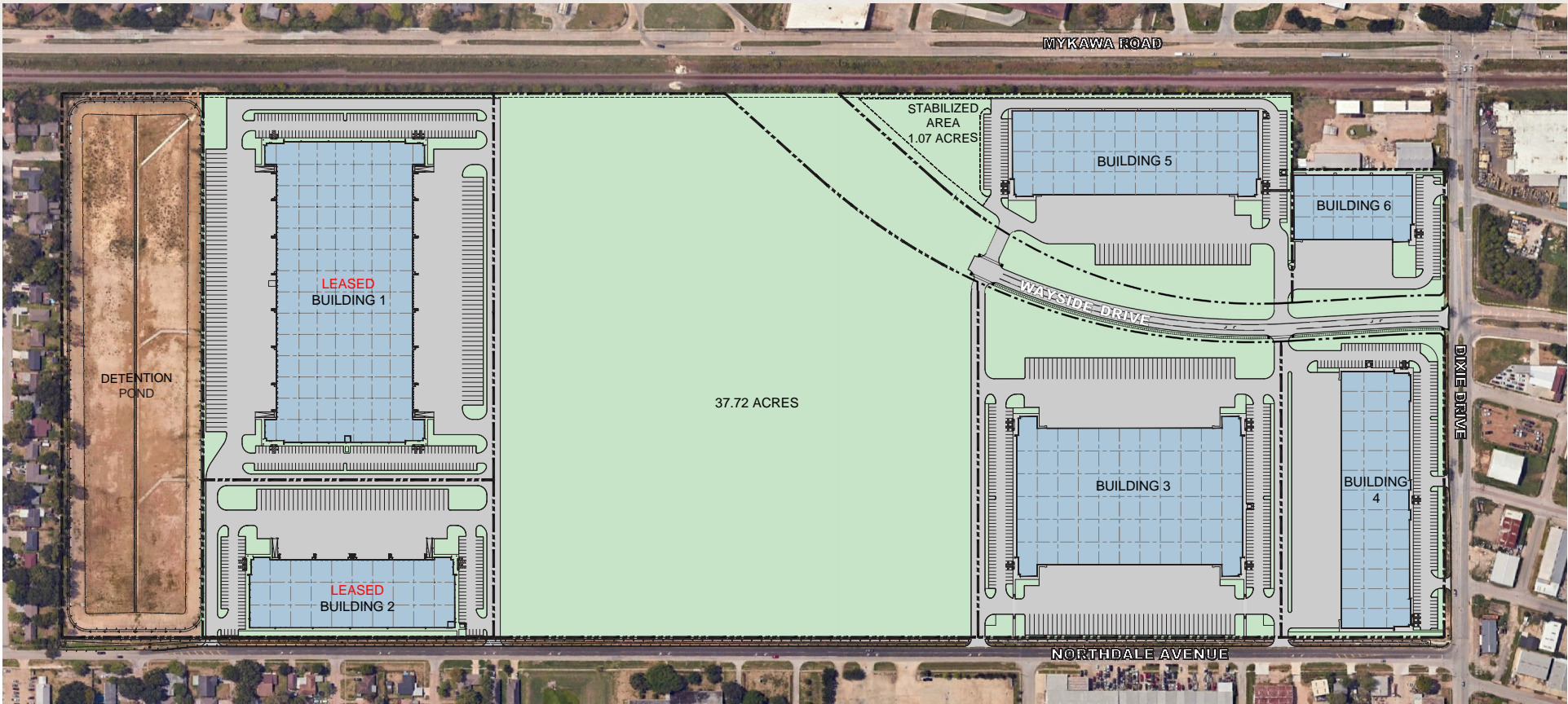
610 Business District

- Phase II Permitted (For Sale or Lease)
- Building 3: 219,487 SF Cross Dock
- Building 4: 121,814 SF Rear Load
- Building 5: 142,721 SF Front Load
- Building 6: 53,110 SF Front Load
- 5 - 38 Acre Sites Available for Lease, BTS or Design Build
- Master Planned Business Park
- City of Houston Utilities
- Detention Provided and in Place
- Outside Storage Available
- Out of the 500 Year Floodplain
- Northdale Ave. Expansion Complete

Drive Times

Texas Medical Center	8.2 Miles (16 Minutes)
Houston CBD	7.7 Miles (20 Minutes)
Manchester Terminal	6.2 Miles (12 Minutes)
Barbours Cut Terminal	23 Miles (30 Minutes)
City Docks	8.1 Miles (17 Minutes)
Hobby Airport	4.9 Miles (11 Minutes)
BNSF South Rail Yard	4.9 Miles (11 Minutes)



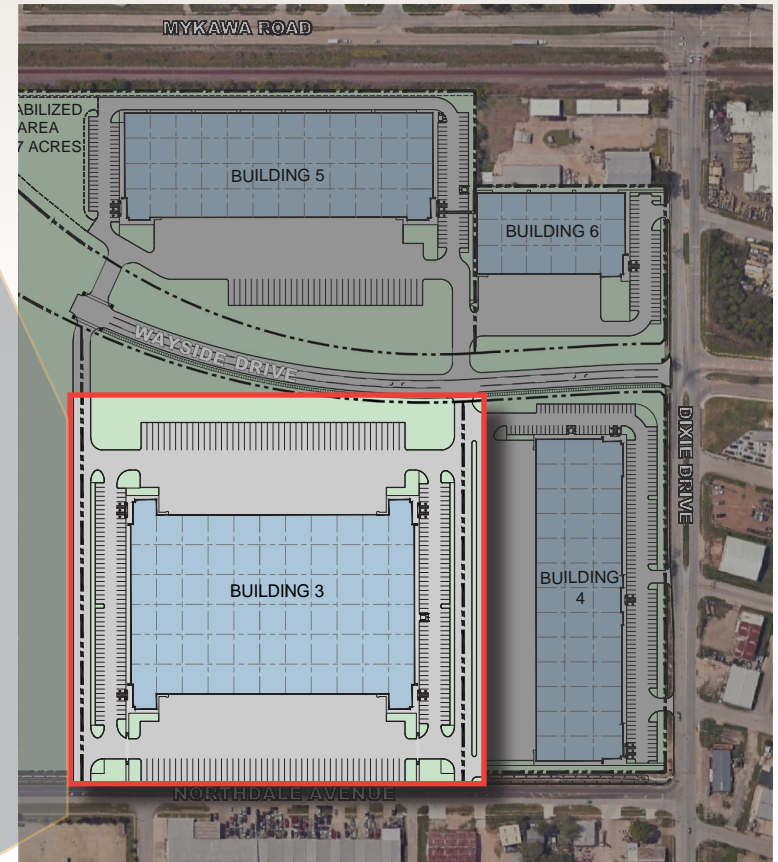
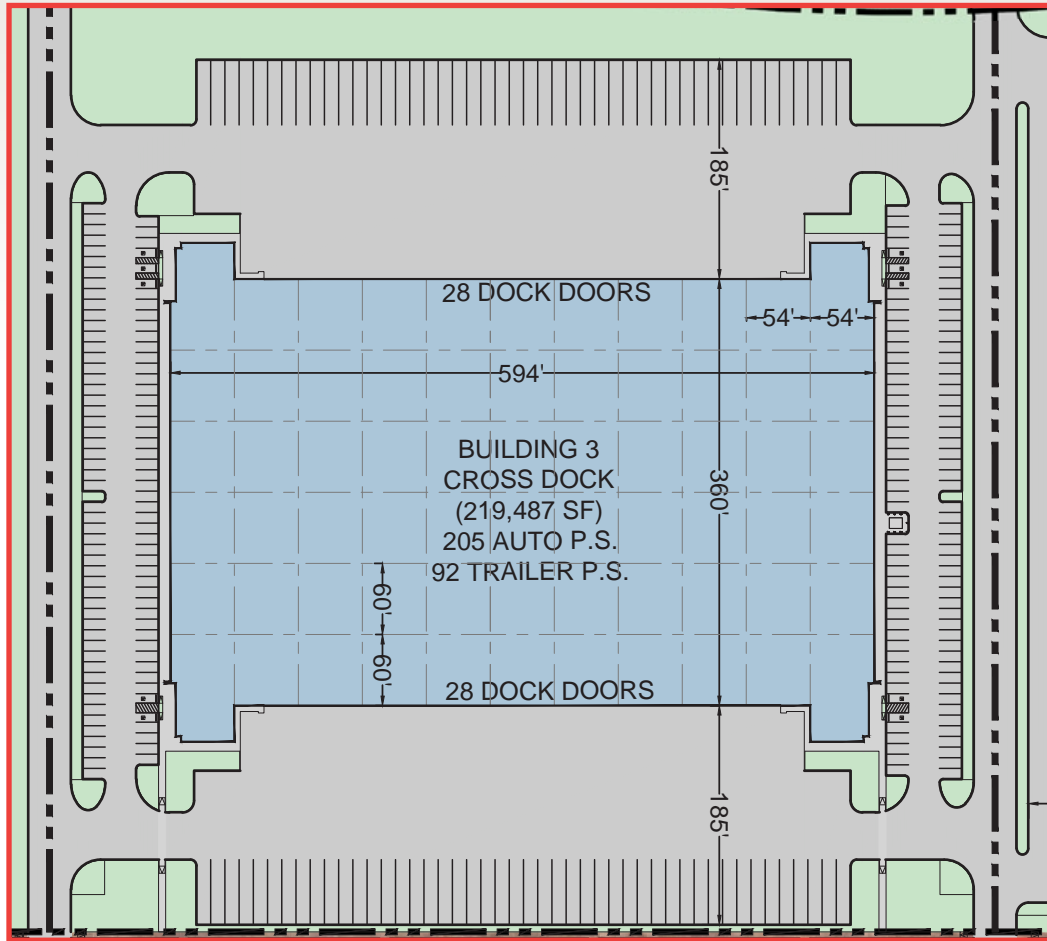


BUILDING 3	
Square Feet	219,487
Acres	15.10
Type	Cross Dock
Dock Doors	56
Column Spacing	60' x 54'
Auto Parks	205
Trailer Parks	92
Truck Court	185'

BUILDING 4	
Square Feet	121,814
Acres	7.80
Type	Rear Load
Dock Doors	42
Column Spacing	60' x 52'
Auto Parks	183
Trailer Parks	N/A
Truck Court	130'

BUILDING 5	
Square Feet	142,721
Acres	10.63
Type	Front Load
Dock Doors	30
Column Spacing	53'4" x 54'
Auto Parks	101
Trailer Parks	34
Truck Court	185'

BUILDING 6	
Square Feet	53,110
Acres	3.12
Type	Front Load
Dock Doors	16
Column Spacing	55' x 52'
Auto Parks	48
Trailer Parks	N/A
Truck Court	130'



219,487 SF
TOTAL SF



Cross Dock
CONFIGURATION



185'
TRUCK COURT



60' x 54'
COLUMN SPACING



56
DOCK DOORS



15.10
ACRES



360'
BUILDING DEPTH



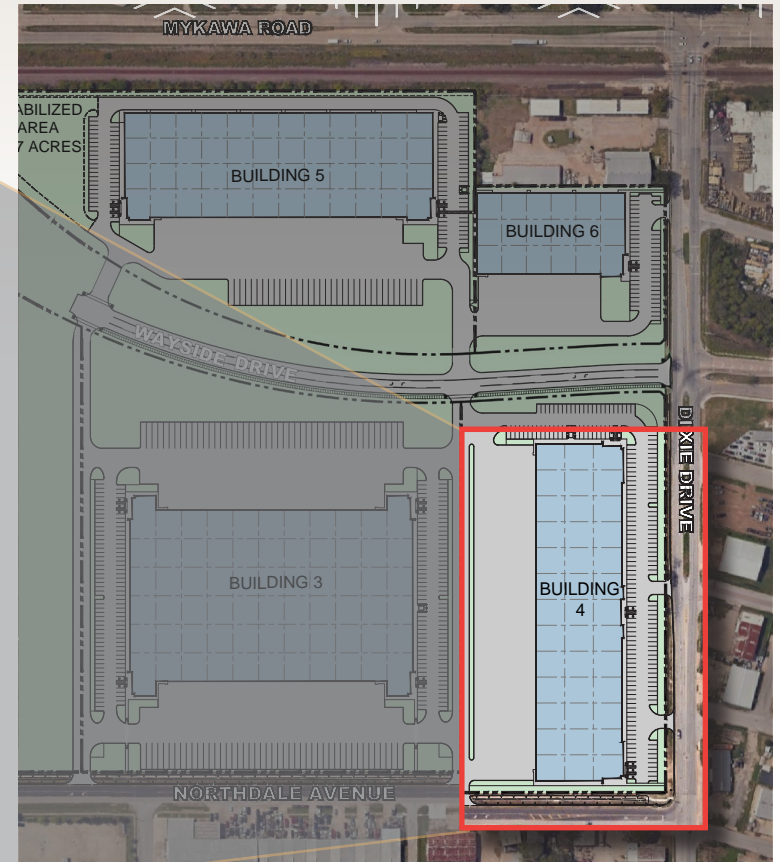
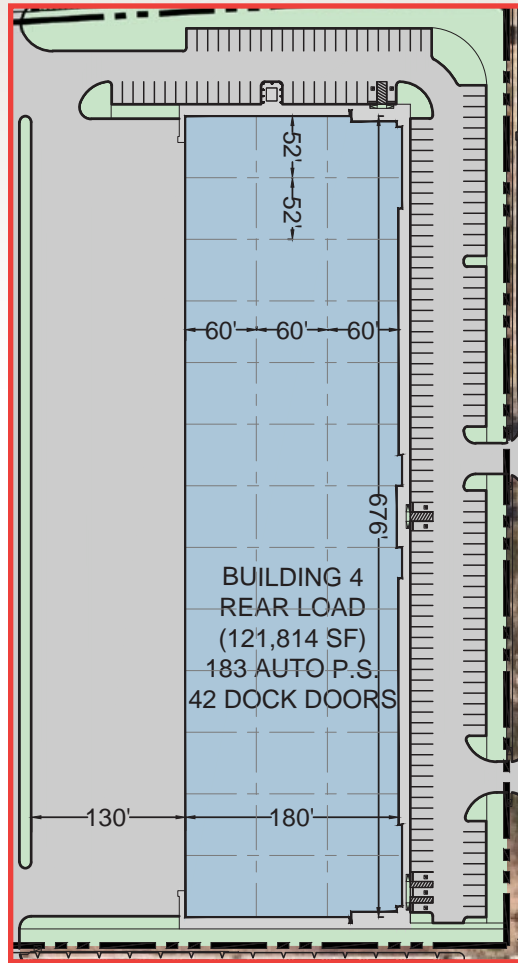
36'
CLEAR HEIGHT



92 Trailer
205 Auto
PARKING



4
DRIVE-IN DOORS



121,814 SF
TOTAL SF



Rear Load
CONFIGURATION



130'
TRUCK COURT



60' x 52'
COLUMN SPACING



42
DOCK DOORS



7.80
ACRES



180'
BUILDING DEPTH



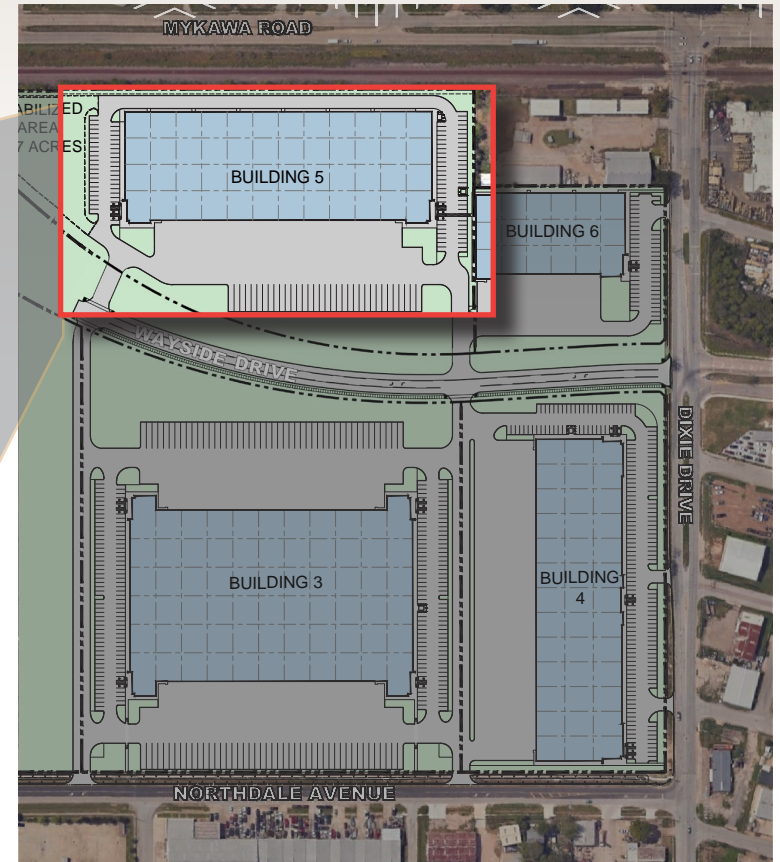
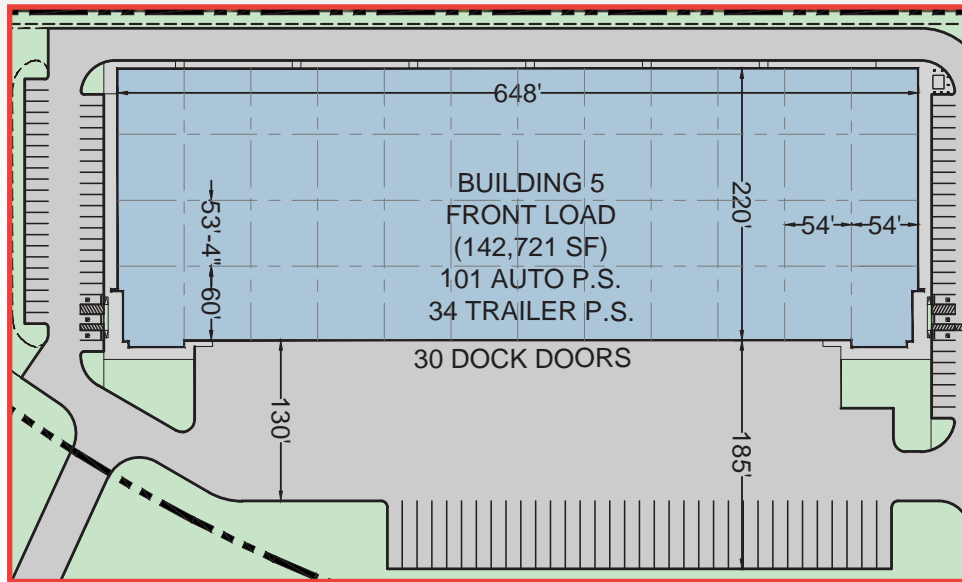
32'
CLEAR HEIGHT



183 Auto
PARKING



2
DRIVE-IN DOORS



142,721 SF
TOTAL SF



Front Load
CONFIGURATION



185'
TRUCK COURT



53.4' x 54'
COLUMN SPACING



30
DOCK DOORS



10.63
ACRES



220'
BUILDING DEPTH



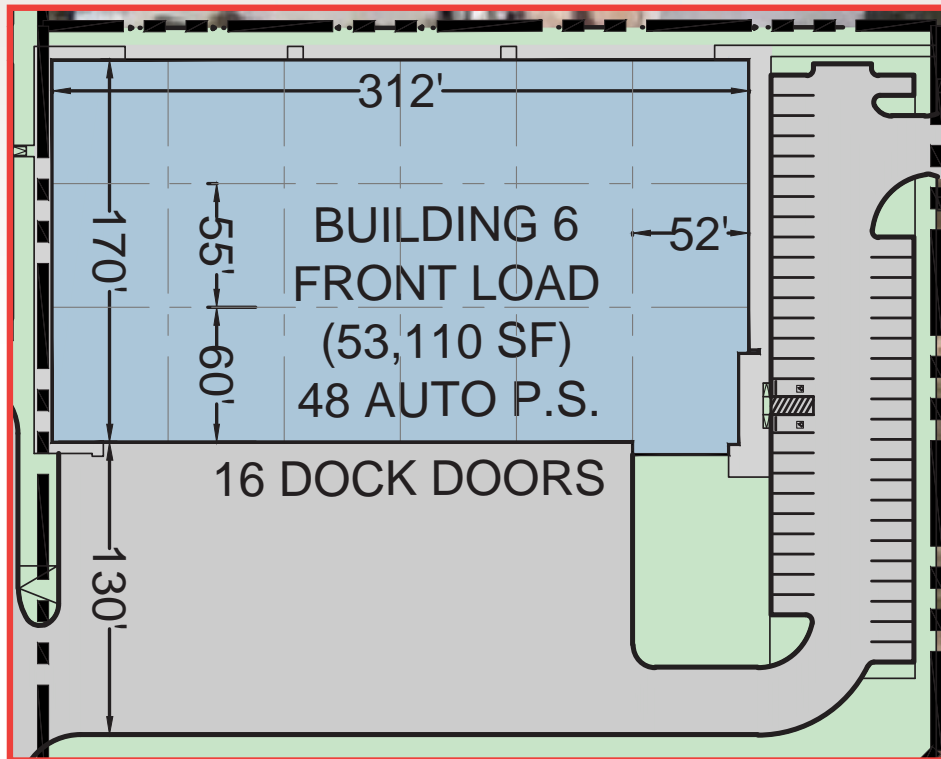
32'
CLEAR HEIGHT



34 Trailer
101 Auto
PARKING



2
DRIVE-IN DOORS



53,110 SF
TOTAL SF



Side Load
CONFIGURATION



130'
TRUCK COURT



55' x 52'
COLUMN SPACING



16
DOCK DOORS



3.12
ACRES



170'
BUILDING DEPTH



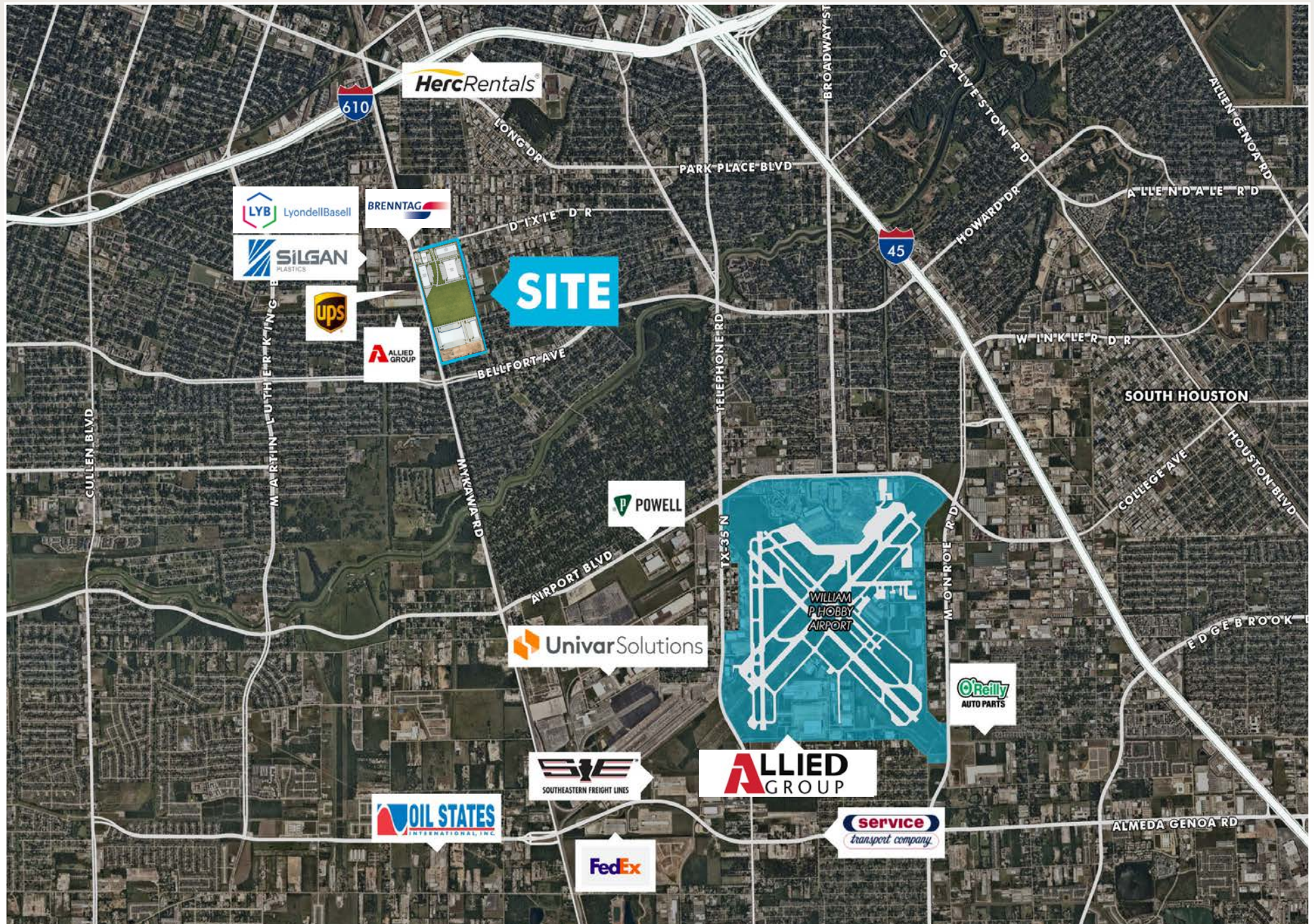
32'
CLEAR HEIGHT



48 Auto
PARKING



1
DRIVE-IN DOORS





610

BUSINESS DISTRICT

FOR ADDITIONAL INFORMATION, PLEASE CONTACT:

ANDREW JEWETT SR.

Senior Vice President

+1 713 577 1735

andrew.jewett@cbre.com

JASON DILLEE

Executive Vice President

+1 713 577 1796

jason.dillee@cbre.com

GREG HOLMES

Senior Associate

+1 713 577 1902

gregory.holmes@cbre.com

KAYLA RIPPLE

Transaction Manager

+1 713 577 1731

kayla.ripple@cbre.com

© 2025 CBRE, Inc. All rights reserved. This information has been obtained from sources believed reliable but has not been verified for accuracy or completeness. CBRE, Inc. makes no guarantee, representation or warranty and accepts no responsibility or liability as to the accuracy, completeness, or reliability of the information contained herein. You should conduct a careful, independent investigation of the property and verify all information. Any reliance on this information is solely at your own risk. CBRE and the CBRE logo are service marks of CBRE, Inc. All other marks displayed on this document are the property of their respective owners, and the use of such marks does not imply any affiliation with or endorsement of CBRE. Photos herein are the property of their respective owners. Use of these images without the express written consent of the owner is prohibited.

CBRE